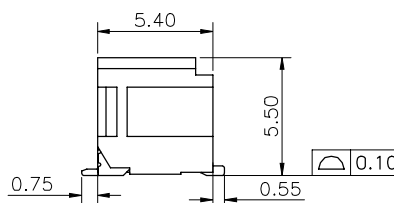
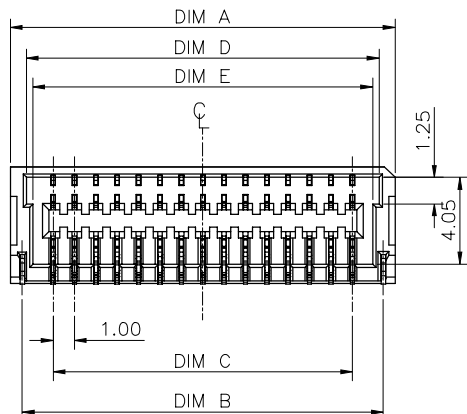
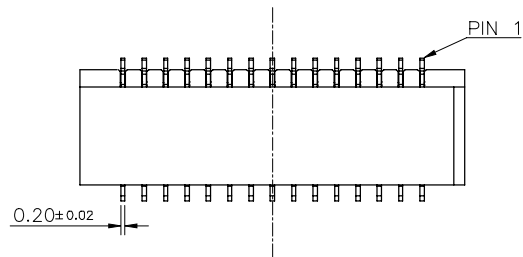


RECOMMENDED PCB LAYOUT
GENERAL TOLERANCE ±0.05



NOTES:

1. MATERIAL:
 - 1.1 HOUSING: THERMOPLASTIC, HIGH TEMP.,UL94V-0. COLOR:SEE PART NUMBER
 - 1.2 CONTACT: COPPER ALLOY.
 - 1.3 FITTING NAIL: COPPER ALLOY
2. FINISH:
 - 2.1 CONTACT:
 - 50~100u" NICKEL UNDERPLATING OVERALL.
 - 1: GOLD ON CONTACT AND SOLDER
 - 2.2 FITTING NAIL:
 - 50~100u" NICKEL UNDERPLATING OVERALL.
 - N:90~120u" MATT TIN PLATING ON SOLDER TAILS,
3. REFLOW SOLDER CAPABLE TO 260°C PER ACES SPEC.
4. SPEC.PLS REFER TO PS-50487-XXXX-XXX
5. PACKAGE PLS REFER TO 50487-XXXX-XX-TRP
6. PART NUMBER:

50487-XXX X X-XXX
 CKTS ——— X
 PACKING ——— X
 0:TAPE & REEL ——— X
 PLATING ——— X
 1:GOLD FLASH

| XXX | LOGO | COLOR |
|-----|------|---------|
| 001 | ACES | NATURAL |
| 002 | ACES | BLACK |

| CKT | DIM A | DIM B | DIM C | DIM D | DIM E |
|-----|-------|-------|-------|-------|-------|
| 010 | 8.0 | 6.9 | 4.0 | 6.5 | 5.9 |
| 012 | 9.0 | 7.9 | 5.0 | 7.5 | 6.9 |
| 016 | 11.0 | 9.9 | 7.0 | 9.5 | 8.9 |
| 020 | 13.0 | 11.9 | 9.0 | 11.5 | 10.9 |
| 024 | 14.0 | 13.9 | 11.0 | 13.5 | 12.9 |
| 030 | 18.0 | 16.9 | 14.0 | 16.5 | 15.9 |
| 040 | 23.0 | 21.9 | 19.0 | 21.5 | 20.9 |
| 050 | 28.0 | 26.9 | 24.0 | 26.5 | 25.9 |

| | | | | |
|--|---|------------------|--|--|
| QUALITY SYMBOLS MAJOR Ⓢ CRITICAL Ⓢ | DRAWN BY Ding,shujin 22/10/27 | DATE 22/10/27 | | |
| GENERAL TOLERANCES (UNLESS SPECIFIED) | CHECKED BY Lu, Jing Quan 22/10/27 | DATE 22/10/27 | | TITLE 1.0 mm WTB WAFER CONN. SMT D/R R/A TYPE |
| X ±0.5 .X ±0.25 .XX ±0.15 .XXX ±0.1 ANGLES ±2° | APPROVED BY hsieh, fu yu 22/10/27 | DATE 22/10/27 | | SIZE A4 RFG NO. N/A SCALE 1:1 SHEET NO. 1 OF 1 REV D DWG NO. 50487-XXXX-XXX |